



SHARE SURVEY OF HEALTH, AGEING
AND RETIREMENT IN EUROPE

NEWSLETTER

No. 20 – February 2017

Contents

Editorial	1
A new Newsletter Format: The Findings Newsletter	2
Global network of ageing surveys: SHARE global sister studies	2
SHARE Country Team Cyprus	3
SHARE Country Team Romania	4
SHARE Country Team Slovakia	5
More than 1200 new users in 2016	6
Selected new Publications	6

Editorial

Dear SHARE users and friends,

We started the New Year optimistically and are quite eagerly looking forward to two events:

Firstly, within the next few weeks, the main data collection of Wave 7 will start in 28 countries. SHARE, as the largest pan-European Social Science Panel Study, breaks a new country record – there have never been more countries in one wave. The Wave 7 questionnaire contains a SHARELIFE module for all respondents who did not participate in Wave 3 (first SHARELIFE wave), as well as a standard module for all respondents who already answered a SHARELIFE interview. SHARELIFE focuses on people's life histories and it links individual micro data with institutional macro data on the welfare state. The questionnaire contains all important areas of the respondents' lives, ranging from partners and children to housing and work history to detailed questions on health and health care. We expect the data collection to be finished at the end of 2017.

Secondly, there will also be a new SHARE data release soon: In spring 2017, we will grant access to Wave 6 data. Of course, all SHARE users will be informed automatically as soon as the data is ready for download.

In this edition of our Newsletter, we want to draw your attention on our global sister studies as well. SHARE is embedded in a global network of ageing studies. Therefore, we highlighted the advantages of research with SHARE-harmonized studies. We moreover proudly introduce three new SHARE Country Teams in this edition: Cyprus, Romania and Slovakia.

Please enjoy reading our SHARE Newsletter No. 20!

Yours sincerely,

Axel Börsch-Supan

A new Newsletter Format: The Findings Newsletter



In December 2016, we introduced a new newsletter format: Our “SHARE Findings Newsletter” will be published about every two months. Its main target group is non-scientific, i.e. press, politicians, organizations and the general public. Hence, its content will be a breakdown of scientific findings for a non-scientific audience. The newsletter aims at making academic research more easily understandable and familiarizing a general audience with the research that is done based on SHARE data. Ideally, these easy-to-understand overviews will have an impact in the press by opening up SHARE research to a bigger audience. If you want to subscribe to this Newsletter, please send an email to: info@share-project.org with the subject: Newsletter subscription – Findings Newsletter. All summaries of SHARE based research are also published on our website: www.share-eric.eu.

Global network of ageing surveys: SHARE global sister studies

One of the great advantages of SHARE lies in its harmonization with other similar studies around the world.

The global network of ageing surveys strengthens the cooperation of surveys all over the world that tackle the same issues relevant for individual and population ageing such as health, disability, retirement, active ageing, family and social support. Some surveys were started earlier than SHARE and have influenced the design of SHARE, namely the US Health and Retirement Study (HRS) and the English Longitudinal Study of Ageing (ELSA). Additionally, SHARE has become a role model for several new ageing surveys worldwide, such as the Korean Longitudinal Study of Aging (KLoSA) and the Japanese Study on Aging and Retirement (JSTAR).

The design of SHARE is most closely harmonized with HRS, ELSA and JSTAR, its American, English and Japanese counterparts. The harmonization enables researchers to analyze data on health, socio-economic status as well as social and family networks in a global perspective and to draw comparisons that exceed the scope of Continental Europe and Israel. In order to give you an idea of the topics for which the harmonization of these studies can be utilized, we would like to provide you with an overview of some recent publications which make use of the three datasets SHARE-ELSA-HRS:

- Berkman, Lisa F., Yuhui Zheng, Maria Glymour, Mauricio Avendano, Axel Börsch-Supan and Erika L. Sabbath (2015): *Mothering alone: cross-national comparisons of later-life disability and health among women who were single mothers*. Journal of Epidemiology and Community Health 69: 865-872. DOI: 10.1136/jech-2014-205149.
- Makoto Nakajima and Irina A. Telyukova (2016): *Housing and Saving in Retirement Across Countries*. In: J. Stiglitz and M. Guzman (eds.). Contemporary Issues in Microeconomics, 88-126. New York: Palgrave Macmillan.
- Chatterji, Somnath, Julie Byles, David Cutler, Teresa Seeman and Emese Verdes (2015): *Health, functioning, and disability in older adults - present status and future implications*. The Lancet 2015, 385(9967): 563–575. DOI: 10.1016/S0140-6736(14)61462-8.

A list of publications using data from all three studies (SHARE, HRS and ELSA) can be found [>> here](#).

Further SHARE “sister studies” are:

1. TILDA - The Irish Longitudinal Study on Ageing
2. CHARLS - Chinese Health and Retirement Survey
3. LASI - The Longitudinal Aging Study in India
4. ELSI - Brasil - Estudo Longitudinal de Saúde do Idoso

Introducing three new country teams: Cyprus, Romania, Slovakia

SHARE Country Team Cyprus

The SHARE project in Cyprus is coordinated by the **Economics Research Centre (CypERC)** of the **University of Cyprus**. The CypERC is an independent non-profit research institution aiming at high quality policy-oriented research in economics. While its emphasis is placed on matters concerning the Cyprus economy, research at CypERC has a broad perspective and aims at results of high academic standards with wide international interest. The main objective of CypERC is to contribute to the economic debate in Cyprus by disseminating research results with policy implications obtained from in-depth analysis and state-of-the-art empirical investigation. The CypERC is financed by Research Organisations in Cyprus and the European Union, through competitive funding procedures, and contributions from governmental and other organisations.

The University of Cyprus was established in 1989. Despite its brief history, it has earned the respect of the international academic community. Recently it has ranked 55th young university by the Times Higher Education (THE) World University Ranking. The main objectives of the university are twofold: the promotion of scholarship and education through teaching and research, and the enhancement of the cultural, social and economic development of Cyprus. It has 8 faculties, 22 departments and 11 research units.



Nikolaos Theodoropoulos (Country Team Leader) is an Assistant Professor of Economics at the University of Cyprus and academic fellow at the CypERC. He has a BSc in Economics (University of York, 1999) and an MSc (2001) and PhD (2006) in Economics (University of Leicester). His research interests are in the area of labour economics. He is working on issues relating to immigration, social interactions, welfare programs, retirement, education, human capital, mobility, personnel economics, wage differentials, discrimination, and the econometric analysis of linked employer-employee data. He has worked on projects funded by the Economic and Social Research Council, the Boston College Centre for Retirement Research, and the U.S. Social Security Administration. He has published in journals such as the American Economic Review, Journal of Economics and Management Strategy, Oxford Economic Papers, Economic Inquiry, Journal of Population Economics and Research in Labor Economics. He is a book contributor published by the Oxford University Press.



Alexandros Polycarpou (Country Team Operator) is a researcher at the CypERC. He holds a BSc and an MSc in Economics Analysis from the University of Cyprus, and an MSc in Economics from the University of Wisconsin-Madison. He is also a PhD Candidate in Economics at the University of Cyprus. His research interests are in the areas of public and labour economics and he has worked on a number of projects about tax-evasion, active labour market policies, labour supply behaviour of individuals, tax and benefit systems simulation and the returns of human capital investment funded by the Cyprus Research Promotion Foundation, the University of Cyprus, the Cyprus Government, and the European Commission. He has published in journals such as Economica, Labour Economics, International Journal of Educational Development, Water Resources Management, and Cyprus Economic Policy Review.

SHARE Country Team Romania

SHARE Romania is coordinated by the Alexandru Ioan Cuza University of Iasi (www.uaic.ro). The Alexandru Ioan Cuza University of Iasi is the oldest higher education institution in Romania. Since 1860, the university has been carrying on a tradition of excellence and innovation in the fields of education and research. With over 23.000 students and 745 academic staff, the university enjoys high prestige at national and international level and cooperates with 403 universities world-wide. The Alexandru Ioan Cuza University is a member of some of the most important university networks and associations: [the Coimbra Group](#), [EUA – European University Association](#), [Utrecht Network](#), [International Association of Universities](#), [University Agency of Francophony](#) and the Network of Francophone Universities (RUFAC). These partnerships offer us the opportunity to experience changes, to have student and teacher mobilities and joint academic, research and strategy programmes.



Alin Marius Andrieș (Country Team Leader), PhD. Habil. in Finance, is Associate Professor of Banking at the Faculty of Economics and Business Administration and Senior Researcher at the Research Center in Finance at the Alexandru Ioan Cuza University of Iasi.

Research interests: Households Finance, Financial Intermediation and Empirical Finance.



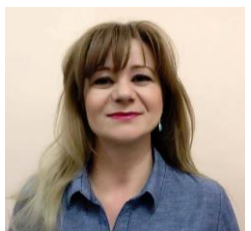
Mircea Asandului (Country Team Operator), PhD. in Cybernetics and Economic Statistics, is Senior Lecturer at the Department of Accounting, Business Information Systems and Statistics, Faculty of Economics and Business Administration at the Alexandru Ioan Cuza University of Iasi.

Research interests: Econometrics, Data analysis, and Economic growth.



Bogdan Căpraru (Expert), PhD Habil. in Finance, is Professor at the Faculty of Economics and Business Administration of the Alexandru Ioan Cuza University of Iasi and PhD supervisor in Finance.

Research interests: Households Finance and Retail banking.



Daniela Viorică (Expert), PhD. in Cybernetics and Economic Statistics, is Associate Professor at the Alexandru Ioan Cuza University of Iasi, Faculty of Economics and Business Administration, Department of Accounting, Business Information Systems and Statistics.

Research interests: Econometrics, Sampling Data analysis, Statistical Software Packages.



Iulian Ihnatov (Expert), PhD, is Senior Lecturer at the Faculty of Economics and Business Administration at the Alexandru Ioan Cuza University of Iasi.

Research interests: Empirical Finance, Emerging Markets and Households Finance.

SHARE Country Team Slovakia

The Institute of Economic Research (IER – SAS) belongs to one of the institutes established right after the creation of the Slovak Academy of Sciences in 1953. In recent periods the institute undertakes national-economy oriented economic research which focuses on finding answers for the state, functioning and directions of the Slovak economy. The research also encompasses utilization and cultivation of the country's potential, finding ways and resources that minimize risks and threats of Slovakia's development during the completion of the transformation process in the context of globalization and European integration.

The Slovak SHARE team from the IER - SAS includes the following members:



Jan Kosta (Country Team Leader) - senior research fellow working at the IER – SAS since 1992. His research interests are related to the problems of labour market and social policy. During the last years he devotes himself first of all to the problems of ageing of the Slovak population and its consequences on social policies and especially on pensions. He has participated in many national and also international research projects.



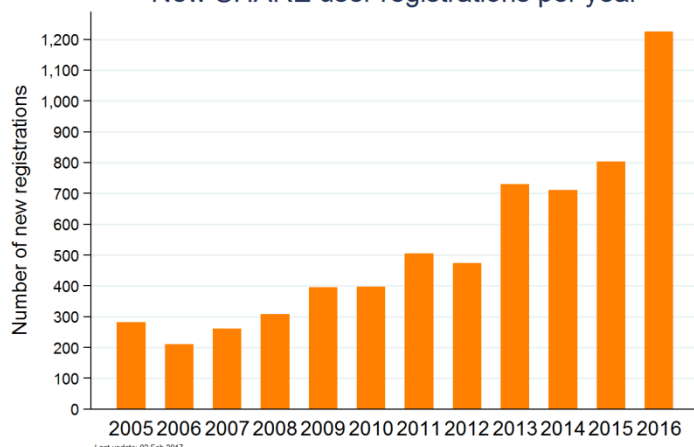
Gabriela Dovál'ová (Country Team Operator) – young researcher from the Socio-Economic Development and Labour Market department of IER - SAS. She provides research with a main focus on unemployment, consumption, active labour market policies, silver economy, ageing population and other problems related to the labour market. She also leads courses of microeconomics and macroeconomics at the Faculty of Law at Comenius University in Bratislava.



Dana Vokounova (Country Team Operator) - external member of IER – SAS; she is a teacher at the Faculty of Commerce at the University of Economics in Bratislava. Her research interests are mostly related to consumer behaviour. She has long-term experience in surveys for the business and public sector.

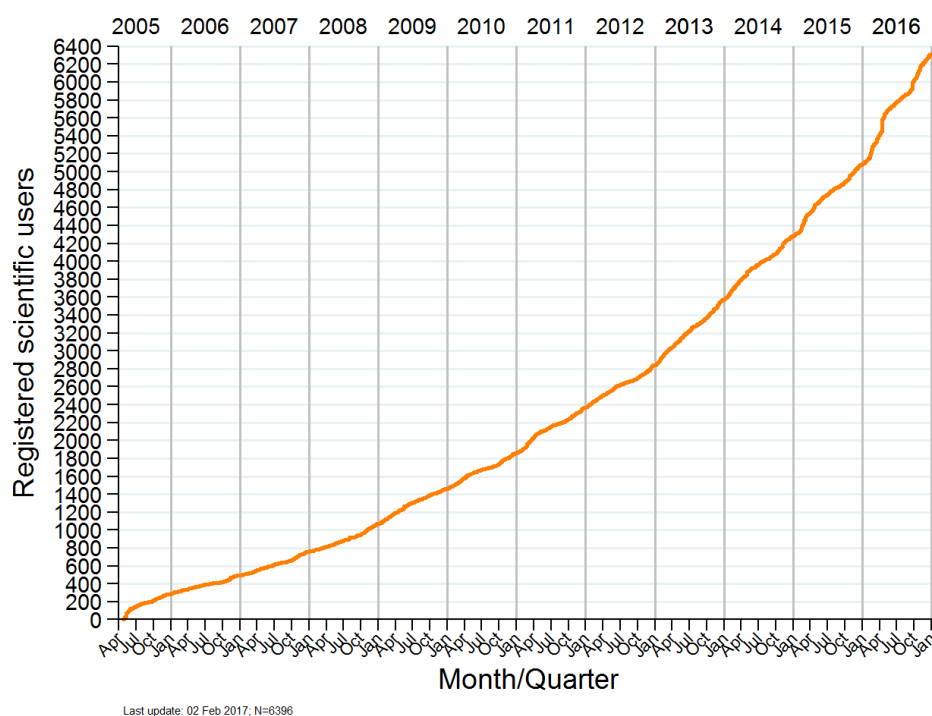
More than 1200 new users in 2016

New SHARE user registrations per year



The number of SHARE users and publications is steadily growing. Especially the number of SHARE users increased in 2016: We gained more than 1200 new researchers who plan to use SHARE data for their research projects, among them also students and junior researchers who work on their master or PhD thesis by using SHARE data. In February 2017 we counted 6400 SHARE users.

Again also the number of SHARE based publications grew. We now have registered more than 1500 SHARE based publications in our database.



Selected new Publications

Books

König, R. (2016): Bildung, *Schicht und Generationensolidariät in Europa*. (Education, class and solidarity between the generations in Europe.) Wiesbaden: Springer VS.

Szydlik, M. (2016): *Sharing lives - adult children and parents*. Oxford: Routledge.

Book Chapters

Knudsen, K. (2016): *Good grandfathers have a partner*. In: Rotkirch, A. and A. Buchanan. Grandfathers - global perspectives, 165-181. Heidelberg: Springer Verlag.

Wahrendorf, M. and T. Chandola (2016): *A life course perspective on work stress*. In: Siegrist, J. and M. Wahrendorf. Work Stress and Health in a Globalized Economy, 43-66. Basel: Springer.

Journal Articles

Achelrod, D., A. Gray, D. Preiss and B. Mihaylova (2016): *Cholesterol- and blood-pressure-lowering drug use for secondary cardiovascular prevention in 2004–2013 Europe*. European Journal of Preventive Cardiology. DOI: 10.1177/2047487316676906.

Amaya, A. E. and S. Presser (2016): *Nonresponse bias for univariate and multivariate estimates of social activities and roles*. Public Opinion Quarterly. DOI: 10.1093/poq/nfw037.

Angelini, V., B. Klijs, N. Smidt and J. Mierau (2016): *Associations between childhood parental mental health difficulties and depressive symptoms in late adulthood: the influence of life-course socioeconomic, health and lifestyle factors*. Plos One. DOI: 10.1371/journal.pone.01677031/journal.pone.0167703.

Belloni, M., E. Meschi and G. Pasini (2016): *The effect on mental health of retiring during the economic crisis*. Health Economics 25(S2): 126-140. DOI: 10.1002/hec.3377.

Brenna, E. and C. Di Novi (2016): *Is caring for older parents detrimental to women's mental health? The role of the European North–South gradient*. Review of Economics of the Household 14 (4): 745–778. DOI: 10.1007/s11150-015-9296-7.

Celidoni, M. and V. Rebba (2016): *Healthier lifestyles after retirement in Europe? Evidence from SHARE. The European Journal of Health Economic*. DOI: 10.1007/s10198-016-0828-8.

Cho, I. (2016): *Health and households' portfolio choices in Europe*. Review of European Studies 8 (4): 183-209. DOI: 10.5539/res.v8n4p183.

Conde-Sala, J., C. Portellano-Ortiz, L. Calvó-Perxas and J. Garre-Olmo (2016): *Quality of life in people aged 65+ in Europe: associated factors and models of social welfare—analysis of data from the SHARE project (Wave 5)*. Quality of Life Research. DOI: 10.1007/s11136-016-1436-x.

Corominas Barnadas, J., J. López-Pousa, J. Vilalta-Franch, L. Calvó-Perxa, D. Canal and J. Garre-Olmo (forthcoming): *Estudio MESGI50: descripción de una cohorte sobre la madurez y el envejecimiento satisfactorio*. (MESGI50 study: description of a cohort on Maturity and Satisfactory Ageing.) Gaceta Sanitaria. DOI: 10.1016/j.gaceta.2016.07.017.

Costa-Font, J., M. Karlsson and H. Øien (2016): *Careful in the crisis? Determinants of older people's informal care receipt in crisis-struck European countries*. Health Economics 25(Suppl. 2): 25–42. DOI: 10.1002/hec.3385.

Courtin, E., M. Knapp, E. Grundy and M. Avendano-Pabon (2015): *Are different measures of depressive symptoms in old age comparable? An analysis of the CES-D and Euro-D scales in 13 countries*. International Journal of Methods in Psychiatric Research 24 (4): 287-304. DOI: 10.1002/mpr.1489.

Deindl, C. and N. Tieben (2016): *Resources of grandparents: educational outcomes across three generations in Europe and Israel*. Journal of Marriage and Family. DOI: 10.1111/jomf.12382.

- Fort, M., N. Schneeweis and R. Winter-Ebmer (2016): *Is education always reducing fertility? Evidence from compulsory schooling reforms*. The Economic Journal 126 (595): 1823–1855. DOI: 10.1111/ecoj.12394.
- Heger, D. (2016): *The mental health of children providing care to their elderly parent*. Health Economics. DOI: 10.1002/hec.3457.
- Herbers, D. and C. Mulder (2016): *Housing and subjective well-being of older adults in Europe*. Journal of Housing and the Built Environment. DOI: 10.1007/s10901-016-9526-1.
- Hüse, L., É. Huszti, A. Toldi and P. Takács (2016): *Elements of the elderly's subjective well-being – An international comparison focusing on the member countries of the Visegrad group*. Kontakt 3 (2016): 202–211.
- Jiménez-Martín, S., J. Labeaga and C. Vilaplana-Prieto (2016): *Interactions between private health and long-term care insurance and the effects of the crisis: evidence for Spain*. Health Economics 25(Suppl. 2): 159–179. DOI: 10.1002/hec.3440.
- Kaschowitz, J. and M. Brandt (forthcoming): *Health effects of informal caregiving across Europe: A longitudinal approach*. Social Science & Medicine: 72-80. DOI: 10.1016/j.socscimed.2016.11.036.
- Minicuci, N., N. Naidoo, S. Chatterji and P. Kowal (2016): *Data Resource Profile: Cross-national and cross-study sociodemographic and health-related harmonized domains from SAGE plus ELSA, HRS and SHARE (SAGE 1, Wave 1)*. International Journal of Epidemiology 45 (5): 1403-140j. DOI: 10.1093/ije/dyw181.
- Nielsen, C., A. Halling and K. Andersen-Ranberg (2016): *Disparities in multimorbidity across Europe – Findings from the SHARE survey*. European Geriatric Medicine. DOI: <http://dx.doi.org/10.1016/j.eurger.2016.11.010>.
- Pakpahan, E., R. Hoffmann and H. Kröger (2017): *Retrospective life course data from European countries on how early life experiences determine health in old age and possible mid-life mediators*. Data in Brief Vol.10: 277–282. DOI: 10.1016/j.dib.2016.11.094.
- Pakpahan, E., R. Hoffmann and H. Kröger (2017): *The long arm of childhood circumstances on health in old age: evidence from SHARELIFE*. Advances in Life Course Research 31. DOI: 10.1016/j.alcr.2016.10.003.
- Petrová Kafková, M. (2016): *The „real“ old age and the transition between the third and fourth age*. Sociología 48 (6): 622-640.
- Portellano-Ortiz, C., J. Garre-Olmo, L. Calvo-Perxas and J. Conde-Sala (2016): *Depresión y variables asociadas en personas mayores de 50 años en España: Análisis con datos del estudio SHARE w5*. (Depression and associated variables in adults over age 50 in Spain: analysis based on data from SHARE w5 study.) Revista de Psiquiatría y Salud Mental.
- Portellano-Ortiz, C., J. Garre-Olmo, L. Calvo-Perxas and J. Conde-Sala (2016): *Symptoms of depression and associated factors in persons aged 50 and over in Europe and Israel: analysis of data from the SHARE project*. International Journal of Geriatric Psychiatry. Wiley-Blackwell. Oxford.
- Reeuwijk, K., D. van Klaveren, R. van Rijn, A. Burdorf and S. Robroek (2016): *The influence of poor health on competing exit routes from paid employment among older workers in 11 European countries*. Scandinavian Journal of Work, Environment and Health. DOI: 10.5271/sjweh.3601.
- Sand, G. and S. Gruber (2016): *Differences in subjective well-being between older migrants and natives in Europe*. Journal of Immigrant and Minority Health. DOI: 10.1007/s10903-016-0537-5.
- Souto Barreto, de, P., M. Cesari, S. Andrieu, B. Vellas and Y. Rolland (2016): *Physical activity and incident chronic diseases: a longitudinal observational study in 16 European countries*. American Journal of Preventive Medicine. DOI: 10.1016/j.amepre.2016.08.028.

- Tomini, F., S. Tomini and W. Groot (2016): *Understanding the value of social networks in life satisfaction of elderly people: a comparative study of 16 European countries using SHARE data*. BMC Geriatrics 16:203. DOI: 10.1186/s12877-016-0362-7.
- Tomini, F., W. Groot and S. Tomini (2016): *Informal care and gifts to and from older people in Europe: The interlinks between giving and receiving*. BMC Health Services Research 16:603. DOI: 10.1186/s12913-016-1830-7.
- Trias-Llimós, S., M. Muszyńska, A. Cámara and F. Janssen (2016): *Smoking cessation among European older adults: the contributions of marital and employment transitions by gender*. European Journal of Ageing. DOI: 10.1007/s10433-016-0401-4.
- Weber, D., S. Dekhtya and A. Herlitz (2016): *The Flynn effect in Europe – Effects of sex and region*. Intelligence: 39–45. DOI: 10.1016/j.intell.2016.11.003.
- Wind, B. and C. DeWilde (2016): *Home-ownership and housing wealth of elderly divorcees in ten European countries*. Ageing & Society. DOI: 10.1017/S0144686X16000969.
- Worts, D., L. Corna, A. Sacker, A. McMunn and P. McDonough (2016): *Understanding older adults' labour market trajectories: a comparative gendered life course perspective*. Longitudinal and Life Course Studies 7 (4): 347 –367. DOI: 10.14301/lcs.v7i4.389.

Working Papers

- Adeline, A. and E. Delattre (2016): *Some microeconomic evidence on the relationship between health and income*. SHARE Working Paper Series 28-2016. Munich Center for the Economics of Aging (MEA). Munich.
- Bergmann, M. and A. Scherpenzeel (2016): *Can a responsive fieldwork design increase response rates and decrease response bias in the Survey of Health, Ageing and Retirement in Europe?* SHARE Working Paper Series 27-2016. Munich Center for the Economics of Aging (MEA). Munich.
- Boissonneault, M. and J. de Beer (2016): *The impact of ability to work at older ages on the postponement of retirement*. Working Paper 2016/04. Netherlands Interdisciplinary Demographic Institute. Groningen.
- Börsch-Supan, A., T. Bucher-Koenen, I. Ferrari, V. Kutlu-Koc and J. Rausch (2016): *Die Entwicklung der Rentenlücke und das Sparverhalten deutscher Haushalte*. (The development of the pension gap and German households' saving behavior.) MEA Discussion Paper 02-2016. Munich Center for the Economics of Aging (MEA). Munich.
- Caroli, E., C. Lucifora and D. Vigani (2016): *Is there a retirement - health care utilization puzzle? evidence from SHARE data in Europe*. Working Paper No.49 49. Università Cattolica del Sacro Cuore. Milan.
- Costa-Font, J., S. Jimenez-Martin and C. Vilaplana-Prieto (2016): *Thinking of incentivizing care? The effect of demand subsidies on informal caregiving and intergenerational transfers*. fedea Working Paper 2016/08. fedea. Madrid.
- Decancq, K. and A. Michiels (2016): *Measuring successful aging with respect for what matters to older Persons*. CSB Working Paper 1604. University of Antwerp. Antwerp.
- de Zwart, P., P. Bakx and E. van Doorslaer (2016): *Will you still need me, will you still feed me when I'm 64? The health impact of caregiving*. Tinbergen Institute Discussion Paper 2016-106/V. Erasmus University Rotterdam. Rotterdam.

- Elitchea, K. and R. Fonseca (2016): *Self-employment, wealth and start-up costs: evidence from a financial crisis*. CEDIA Working Paper 16-07. Université LAVAL. Ville de Québec.
- Fonseca, R. and D. Christelis (2015): *Labor market policies and self-employment transitions of older workers*. Cirano Scientific Series 2015s-50. Cirano. Montréal.
- Gousia, K. (2016): *Financial literacy and long-term care insurance coverage*. SHARE Working Paper Series 26-2016. Munich Center for the Economics of Aging (MEA). Munich.
- Heger, D. and T. Korfhage (2016): *Care choices in Europe: To each according to his needs?* Ruhr Economic Papers 646. Ruhr-Universität Bochum. Bochum.
- Heger, D. and I. Kolodziej (2016): *Changes in morbidity over time – Evidence from Europe*. Ruhr Economic Papers 640. Ruhr-Universität Bochum. Bochum.
- Kosák, D. (2016): *Characteristics of aging population in Europe and Israel, their health care utilization and prevalence of supplementary health insurance*. Proceedings of the 21th International Conference - Theoretical and Practical Aspects of Public Finance 2016. University of Economics. Prague.
- Ponomarenko, V. (2017): *Wealth accumulation over the life course. The role of disadvantages across the employment history*. Université du Luxembourg Working Paper. Luxembourg.
- Scholz, D., B. Surmann, S. Elkenkamp, M. Batram and W. Greiner (2016): *Creating populations with partnerships for large scale agent-based models - a comparison of methods*. SummerSim -SCSC 2016. Society for Modeling & Simulation International. Vista.
- van Ewijk, R. and M. Lindeboom (2016): *Why people born during World War II are healthier. Discussion Paper Series 1619*. University of Mainz. Mainz.
- Xiao, M. and C. O'Neill (2016): *A comparative examination of healthcare use related to hearing impairment in Europe*. NUI Galway Working Paper. National University of Ireland. Galway.
- Zamarro, G. and N. Coe (2015): *How does retirement impact health behaviors? An international comparison*. CESR -Schaeffer Working Paper Series 2015-033. University of Southern California. Los Angeles.

Others

- Bristle, J. (MEA), S. Butt (ESS ERIC HQ/CITY), T. Emery (NIDI), R. Luijkx (TiU), A. M. Maineri (TiU), S. Pflüger (MEA), A. Scherpenzeel (MEA), S. Zins (GESIS) (2016): *Report on auxiliary data in available country registers*. SERISS-Deliverable, Number 2.5, WP 2.
- Lunau, T. (2015): *Psychosoziale Arbeitsbelastungen als Risikofaktoren depressiver Störungen: der Einfluss des arbeits- und sozialpolitischen Kontextes*. Doctoral dissertation. University of Düsseldorf. Düsseldorf.
- Pavan, S. (2016): *Investigating uncertainty through CUB models*. Master's thesis. University of Padua. Padua.
- Saller, A. (2016): *A gender perspective on retirement patterns in Europe: the role of work related characteristics in explaining cross country differences in retirement decisions*. Master's thesis. University of Lund. Lund.
- Scherpenzeel, Annette (MEA), Angelica M. Maineri (TiU), Johanna Bristle (MEA), Senta - Melissa Pflüger (MEA), Ilziya Mindarova (TiU), Sarah Butt (ESS ERIC HQ/CITY), Stefan Zins (GESIS), Tom Emery (NIDI), Ruud Luijkx (TiU) (2017): *Report on the use of sampling frames in European studies*, Deliverable 2.1 of the Synergies for Europe's Research Infrastructures in the Social Sciences (SERISS) project.

Schmidutz, Daniel (2016): *Synopsis of Policy-Rules for Collecting Biomarkers in Social Surveys – Field Report on the Collection of Dried Blood Spot Samples in SHARE*, Deliverable D6.10 of the Synergies for Europe's Research Infrastructures in the Social Sciences (SERISS) project.

Sterniczuk, R. (2016): *Disruption of sleep and circadian rhythm organization as risk factors for diagnosis of Alzheimer's disease*. Doctoral dissertation. Dalhousie University. Halifax.



SHARE SURVEY OF HEALTH, AGEING
AND RETIREMENT IN EUROPE

Contact and Imprint

SHARE-ERIC

Amalienstraße 33
80799 Munich
Germany

Fax: +49-(0)89-38602-390

E-Mail: info@share-project.org

[Facebook](#)

[Twitter](#)

To unsubscribe from the Newsletter, please
send an email to info@share-project.org.

share-eric.eu

© SHARE-ERIC